



# Town Line Farm Trails

38 Town Line Road, Roxbury, CT

## About the Trails

These trails were created by the Bridgewater Land Trust. A partnership with the Roxbury Land Trust enabled us to connect our trails to their trail network. Maps of the Roxbury trails can be found at [www.roxburylandtrust.org](http://www.roxburylandtrust.org)

Trails are open from sunrise to sunset. Dogs must remain on leash. Motorized vehicles are not permitted. Recreational use of our hiking trails are carried out at your own risk.



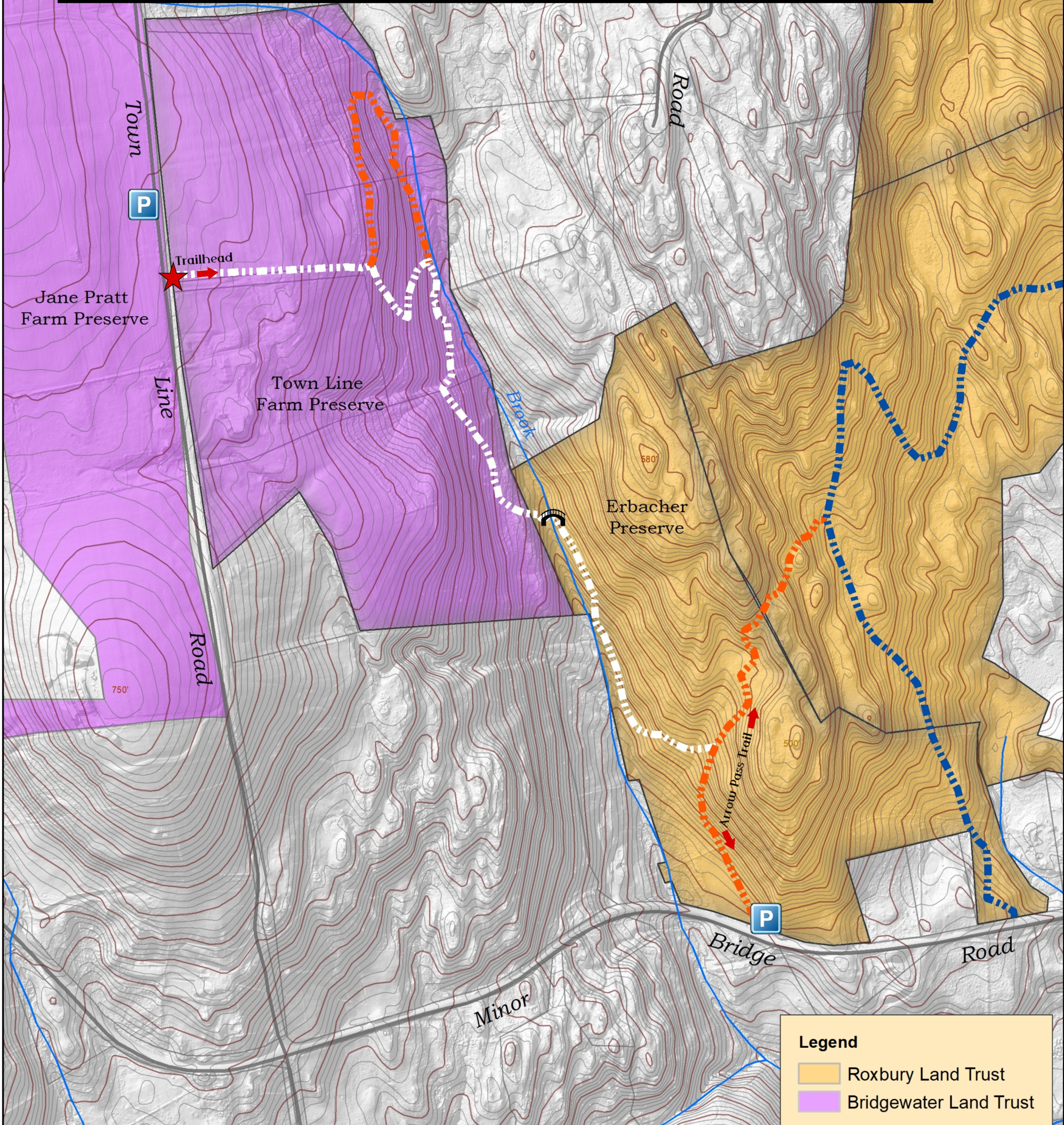
### Parking/Start

Park at the Jane Pratt Preserve parking lot. From there walk along Town Line Road toward the Town Line Farm barn complex. Look for the trailhead sign on the fence and proceed along the fence line.

### Red Loop Trail .5 miles Moderate



### White Connector Trail 1 mile Moderate



**Legend**

- Roxbury Land Trust
- Bridgewater Land Trust