



BWLT NEWS

Protecting The Land You Love

May, 2023

Bridgewater Land Trust Receives Land Donation

Governor Ned and Annie Lamont donate 45 acres

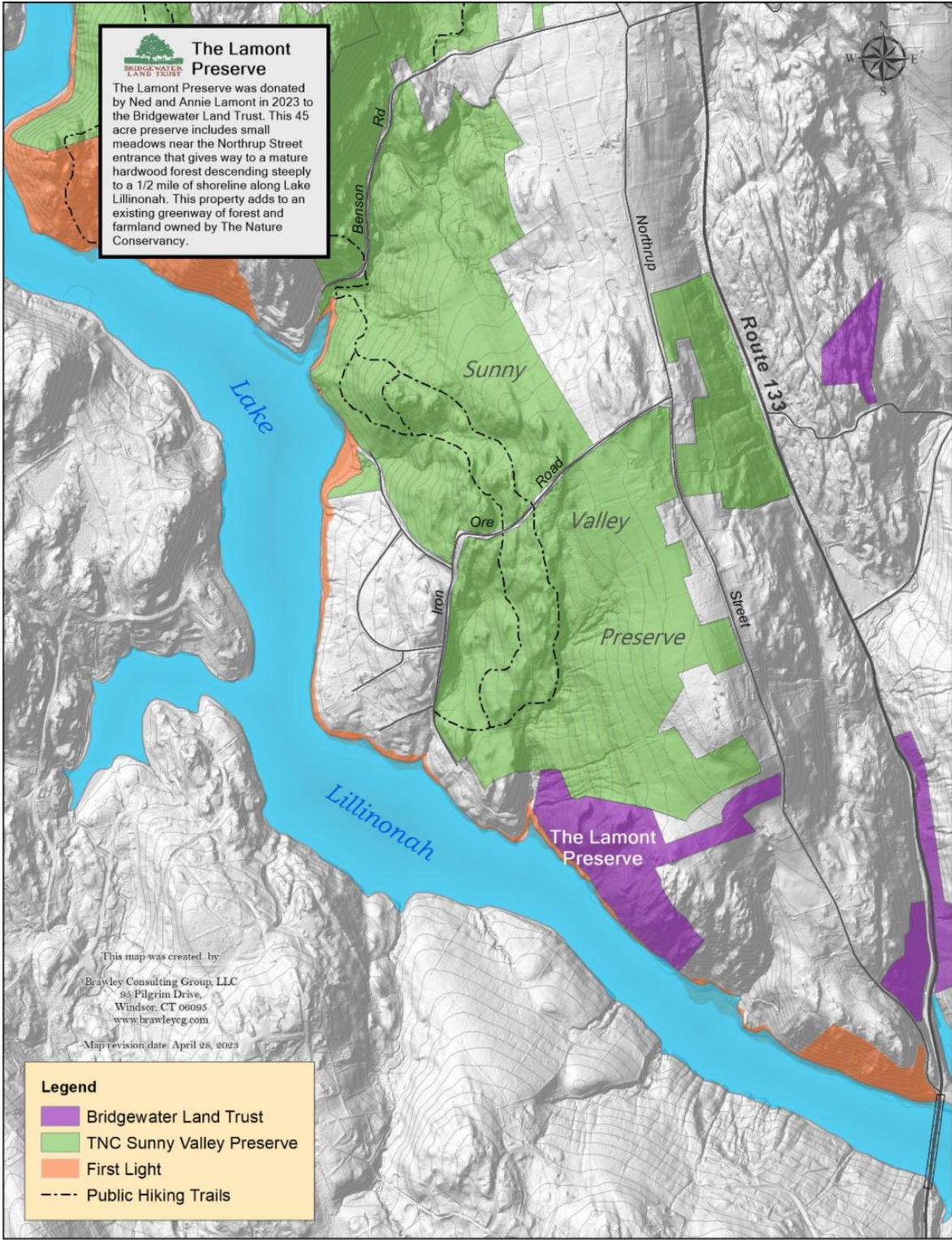
The Bridgewater Land Trust is pleased to announce the permanent protection of 45 acres of forestland, meadow and wetlands along Lake Lillinonah with connecting frontage on Northrup Street. The land was donated to the Land Trust by Governor Ned Lamont and his wife Annie Lamont who have owned the Bridgewater property since 2005. The conservation value of this land is particularly high with almost half of a mile of lake frontage. In addition, it extends an existing protected greenway owned by the Nature Conservancy and is part of an identified small core forest thus protecting vital wildlife habitat.

This 45 acre preserve will be called The Lamont Preserve and includes small meadows near the Northrup Street entrance that gives way to a mature hardwood forest descending steeply to the shoreline along Lake Lillinonah.

Annie Lamont expressed her excitement in preserving this beautiful land, "It has been a pleasure to work with the Bridgewater Land Trust, I am confident they will be good stewards. The environmental benefits, protection of wildlife and extension of a protected forest is truly a gift to the entire community."

Julie Stuart, Executive Director of the Trust is thrilled that this land will remain open and natural. "We are very grateful to the Lamont's for preserving this land in perpetuity. We look forward to further evaluation of the property to determine how it can be best preserved. There is potential for public access from existing trails owned by the Nature Conservancy."

Christian Feuer, president of the Trust, recognized the generational impact of the incredible contribution made by the Lamont's. "This generous donation will not only enrich our community, but also inspire others to support our mission of conserving our precious land."



Bridgewater Land Trust - P.O. Box 8 - Bridgewater, CT 06752 - www.bridgewaterlandtrust.org

Images of The Lamont Preserve



On The Ridge Land Trust Benefit

You Are Cordially Invited

Kick-off your summer at an exciting Land Trust benefit on Friday night, June 30th. Guests will be treated to sweeping views on a ridgetop of an active Bridgewater farm. There will be

locally sourced fare and drinks, bluegrass music and hay rides on a comfortable party wagon. There are table sponsorship opportunities available. Many thanks to Bridgewater residents Donna Zaccaro and Paul Ullman for hosting this gathering. Please contact Julie Stuart at julie@bridgewaterlandtrust.org to reserve your tickets. Space is limited.



Join hosts Donna Zaccaro & Paul Ullman

On The Ridge

Friday, June 30th 5:30 PM - 7:30 PM
79 Second Hill Road, Bridgewater, CT

*Featuring locally sourced appetizers & drinks,
a bluegrass trio and scenic hayrides!*


A Benefit For The Bridgewater Land Trust
Suggested donation per person Benefactor: \$500 Friend: \$250 Guest: \$150
Table sponsor: \$1,000 (includes 5 tickets)
RSVP to julie@bridgewaterlandtrust.org
Checks: BWLT PO Box 8 Bridgewater, CT 06752

Thank You To Our On The Ridge Sponsors

Event Sponsors: Donna Zaccaro & Paul Ullman, Katherine Burke & Ted Alt, Annie & Rich Kaplon, Mae & Tom Orkisz, Will Stuart of Berkshire Hathaway

Product Sponsors: The Litchfield Distillery, Bridgewater Chocolate, Cynthia & Christian Feuer, Stuart Family Farm, Molly & Andrew Smith, Shallow Brook Farm, Susan & Joe Wilcox

Volunteers Get It Done!

We have accomplished amazing work this spring with help from many volunteers. Over 50 residents pitched in for Town Cleanup Day in April and another dozen for Trail Cleanup in May. Thank you!



Spring Hikes

Check out our organized hikes and join us if you can!



Learn about the edible and medicinal uses of common weeds, trees and native plants of Bridgewater with seasoned forager and expert herbalist Alison Birks, MS, RH (AHG), CNS. We will nibble, touch, smell and engage our senses in the plant world around us as we wander. Topics to be covered include: sustainable foraging, plant identification, folklore and more!



Join Us!
Plant Exploration
HIKE

All are welcome to this free event.

Sat., May 27th
10 AM - 12 Noon
Hike begins at 10 AM
Bridgewater Town Park
221 Tappen Road

Heavy rain cancels. Space is limited RSVP is required:
julie@bridgewaterlandtrust.org



The Bridgewater Land Trust & the Bridgewater Recreation Commission invite you to hike with us! We are offering a guided, 2.5 mile moderate hike with some steep inclines up Wolf Pit Mountain.

This is a free event, no registration is required.



Heavy rain cancels. Questions email: julie@bridgewaterlandtrust.org

Join Us!

CT Trails DAY HIKE

**Sat., June 3rd
9 AM - 11 AM**

**Hike begins at 9 AM
Clatter Valley Park
158 Town Farm Road
New Milford, CT 06776**

Spotlight on Bridgewater Barns

This barn along Northrup Street was originally two barns, part of which was moved from the

center of Bridgewater to this location in 1910. The beams inside reflect different eras with both hand hewn and more modern rough sawn beams. For decades, this barn was part of a large dairy operation but this particular barn housed chickens, turkeys, horses and equipment. In 2010, Bud Wright purchased the 32 acres with the barn and has placed a conservation easement on the property ensuring that it will always remain as pastureland.



Support Us

The Bridgewater Land Trust is a federally recognized 501(c) (3) charitable organization, and all your contributions are tax deductible.

DONATE

Stay Social

P.O Box 8
Bridgewater, CT 06752
Phone: (860) 355-8233
E-Mail: bwlt@sbcglobal.net
www.bridgewaterlandtrust.org



